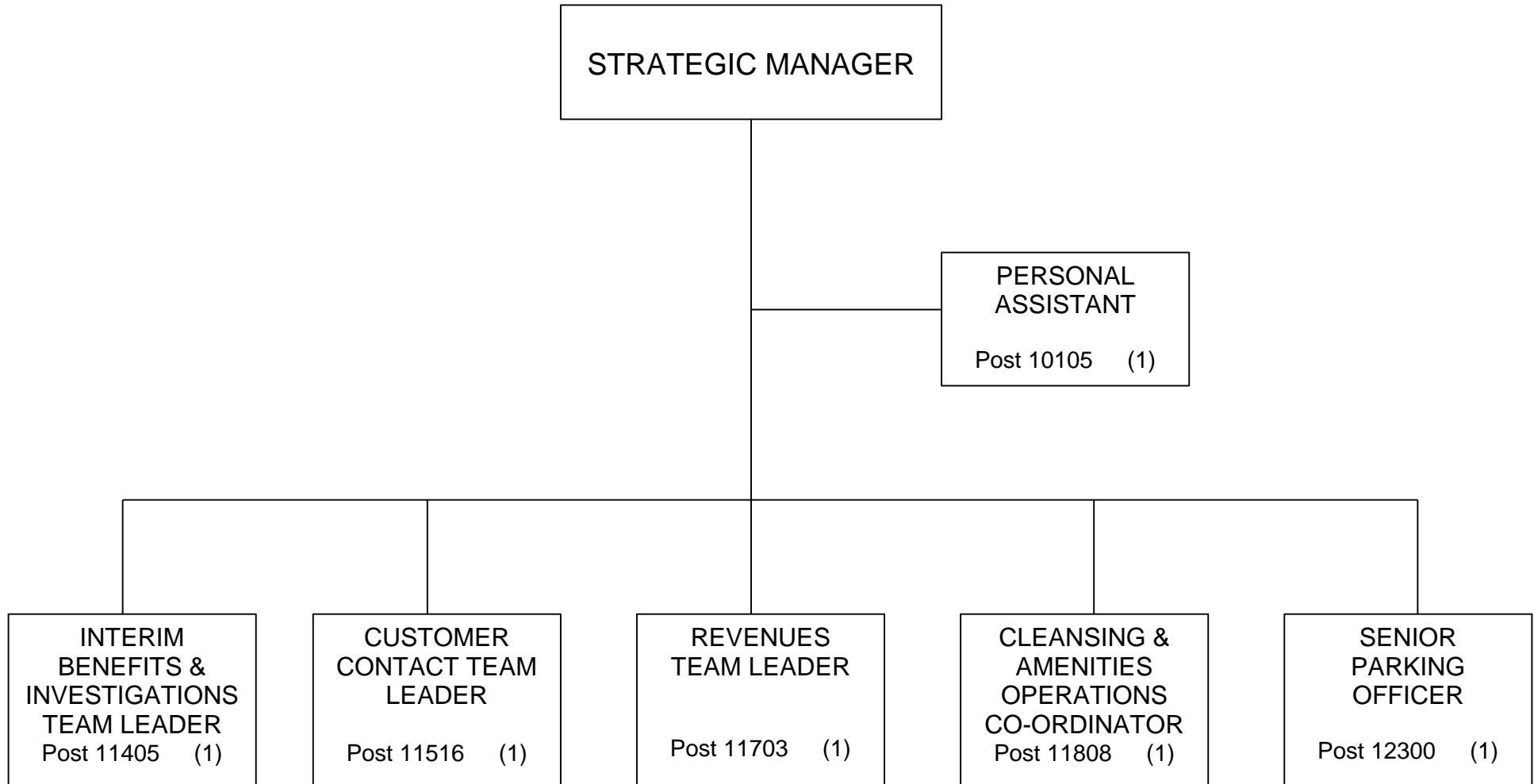
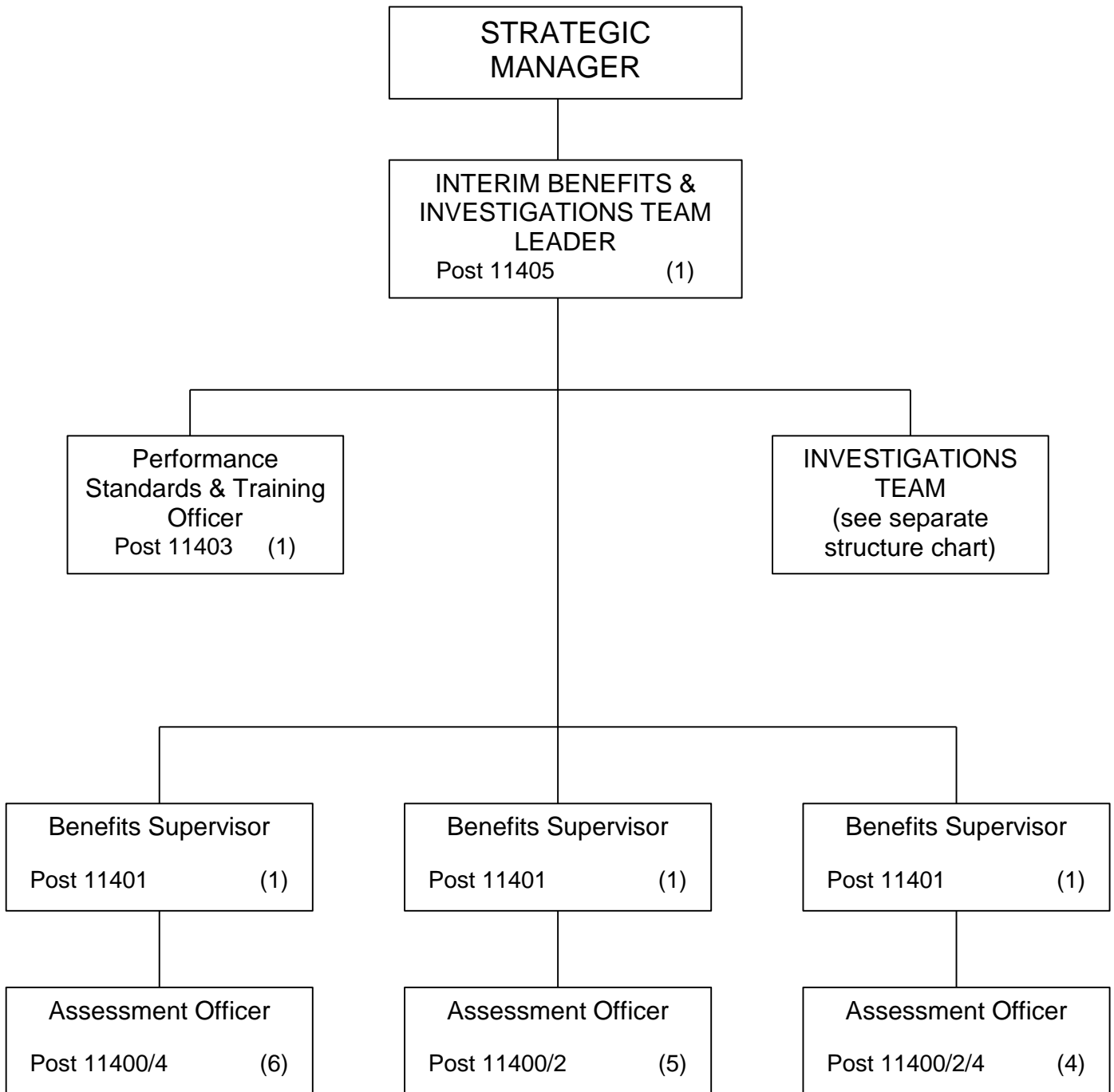


# ORGANISATION CHART FOR CUSTOMER SERVICES



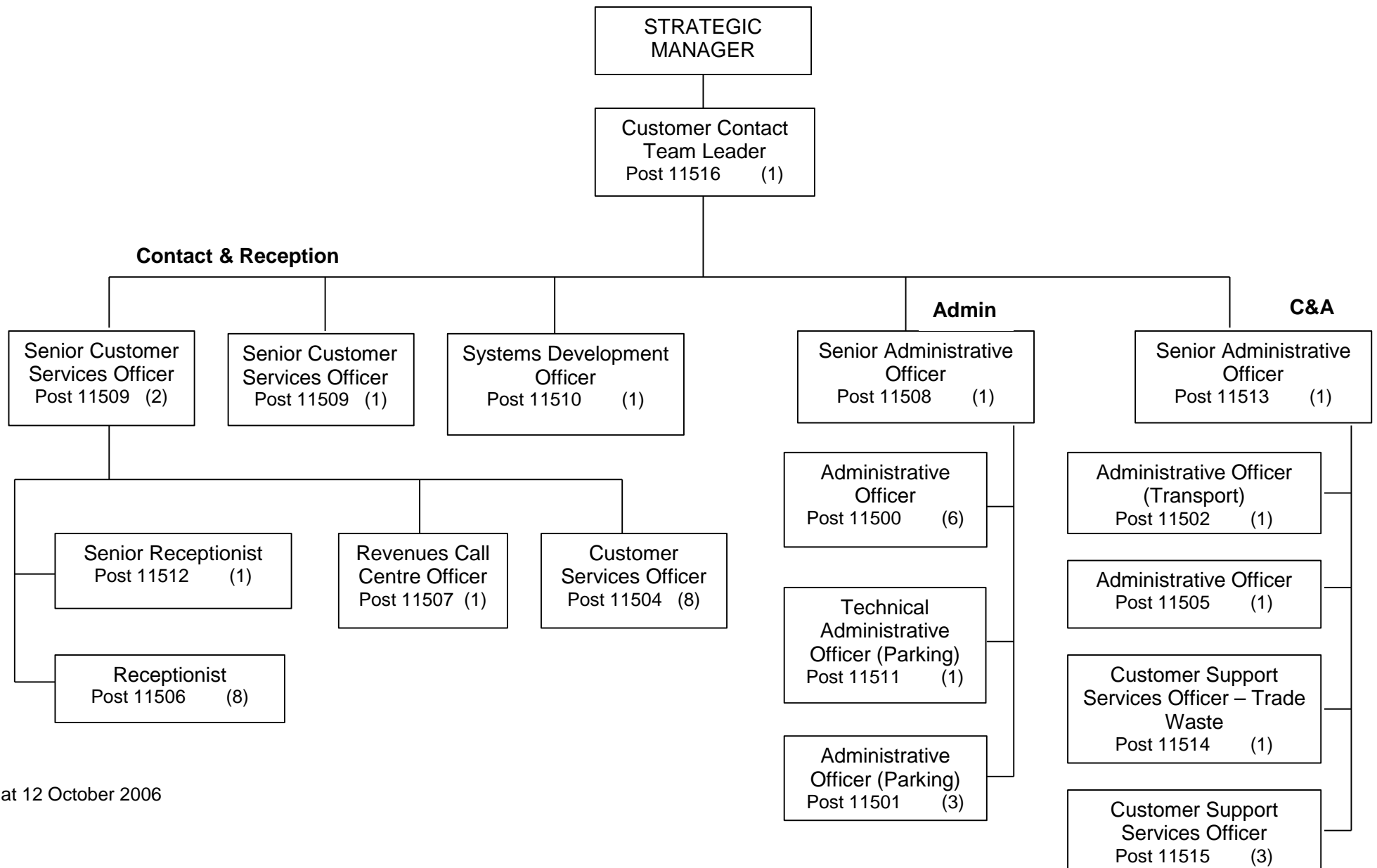
As at 17 October 2006

# ORGANISATION CHART FOR CUSTOMER SERVICES



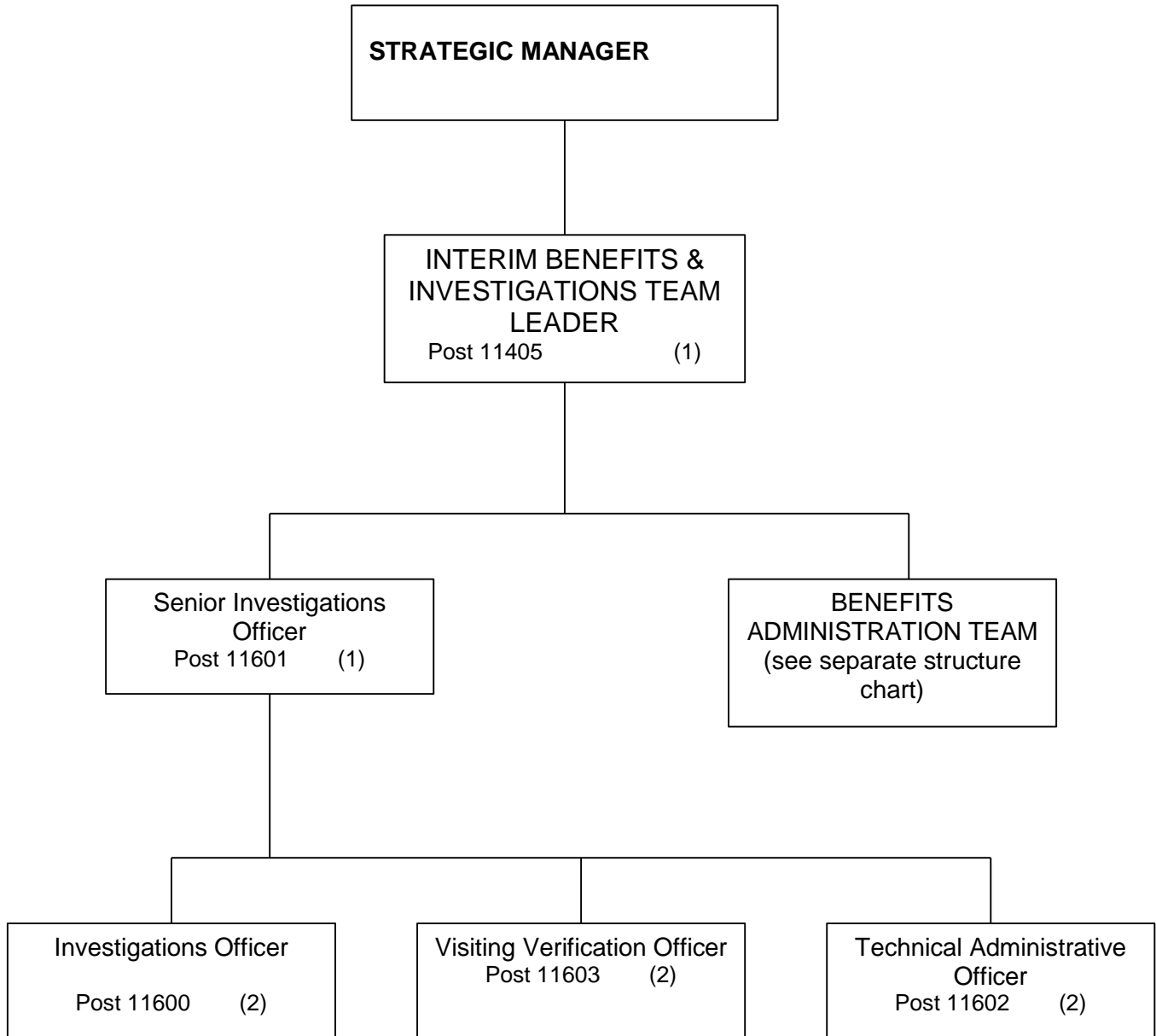
As at 10 October 06

# ORGANISATION CHART FOR CUSTOMER SERVICES



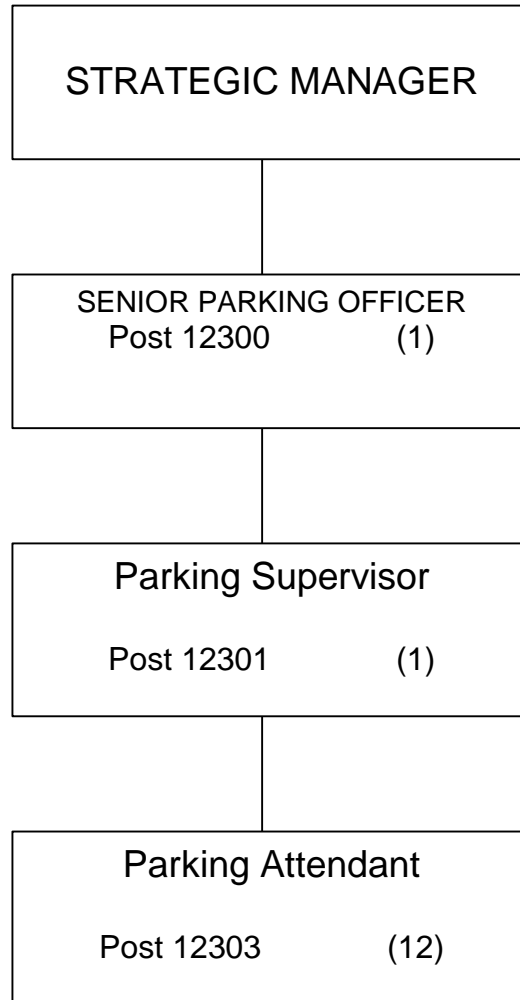
As at 12 October 2006

# ORGANISATION CHART FOR CUSTOMER SERVICES



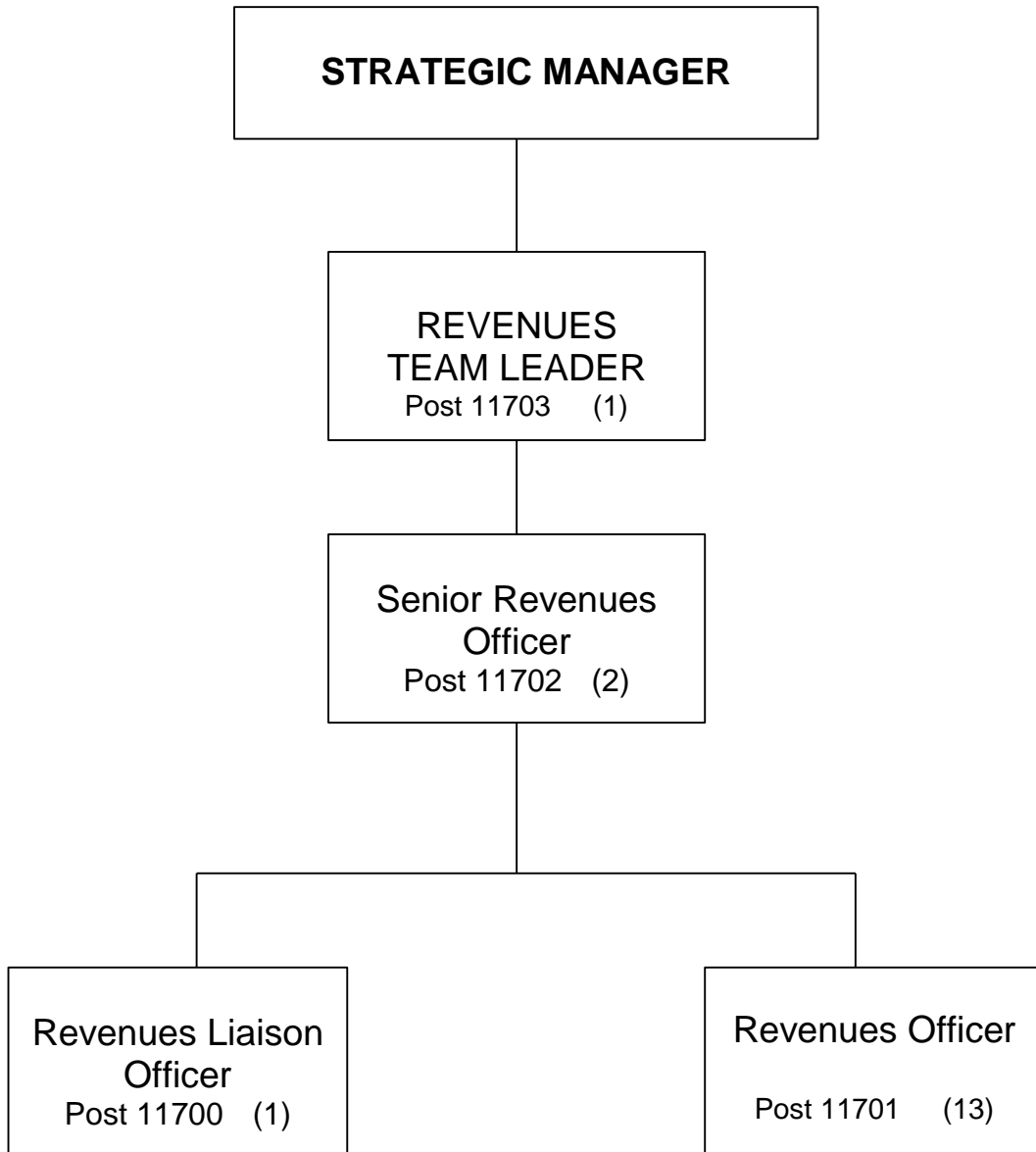
As at 10 October 2006

# ORGANISATION CHART FOR CUSTOMER SERVICES



As at 12 October 2006

# ORGANISATION CHART FOR CUSTOMER SERVICES



As at 31 July 2006